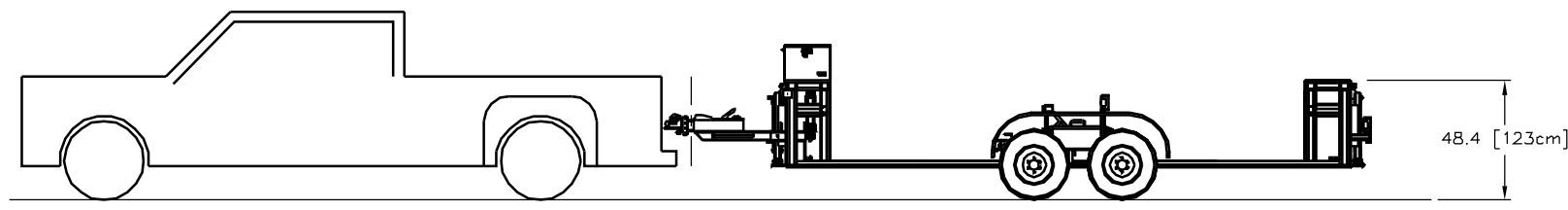
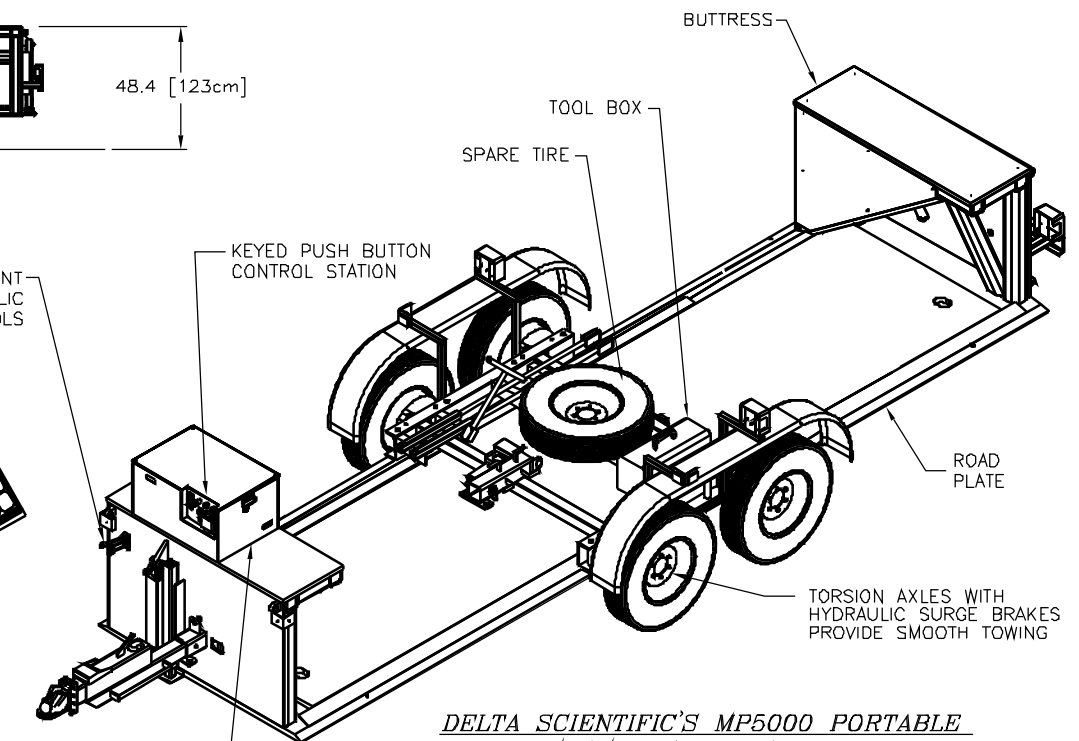


OPTIONS	PART NO.
HITCH BALL, 2-5/16"	2461-130
LUNETTE EYE, 3" (EU COMPLIANT)	2461-129
SOLAR PANEL ASSEMBLY	90593
CABLE KIT, 120 VOLTS, 60 Hz	9149-120
CABLE KIT, 220 VOLTS, 50 Hz	9149-220
TURN TABLE, BARRIER	9251
REMOTE PUSH BUTTON STATION	MPL-4050-20'
TRAFFIC SIGNAL, DOWN L/S, MTC-26 (24")	B2050
FULLY DOWN LIMIT SWITCH (9056-3)	B2010
POST, SIGNAL LIGHT, 48" HIGH	MPL-20



TOW EXAMPLE



DELTA SCIENTIFIC'S MP5000 PORTABLE CRASH RATED BARRIER

THE SYSTEM HAS BEEN TESTED IN FULL SCALE CONFIGURATION AT AN INDEPENDENT TESTING LABORATORY IN ACCORDANCE WITH ASTM 2656-07 M30 & ASTM 2656-07 M40 (K4,K8). (FULL SCALE CRASH TEST FOR CERTIFICATION SUCCESSFULLY CONDUCTED BY KARCO ENGINEERING, ADELANTO, CA ON MAY 15, 2009). IT IS CONFIGURED FOR EXPEDITED DEPLOYMENT AND, AS NEEDED, RETRIEVAL AND RELOCATION.

THIS BARRIER SYSTEM CAN BE SITED ON EXISTING CONCRETE OR ASPHALT ROADWAYS OR VERGES; LEVEL COMPACTED SOILS OR SOME COMBINATION OF THESE. NO EXCAVATION OR SUB-SURFACE PREPARATION IS REQUIRED.

THE MP5000 IS A PHALANX TYPE BARRIER RAMP TOTALLY SELF CONTAINED WITH FREE PASSAGE BETWEEN BUTTRESSES OF 16 FT. (192IN.). LOW PROFILE FREE TRAFFIC FLOW BARRICADE RAMP.

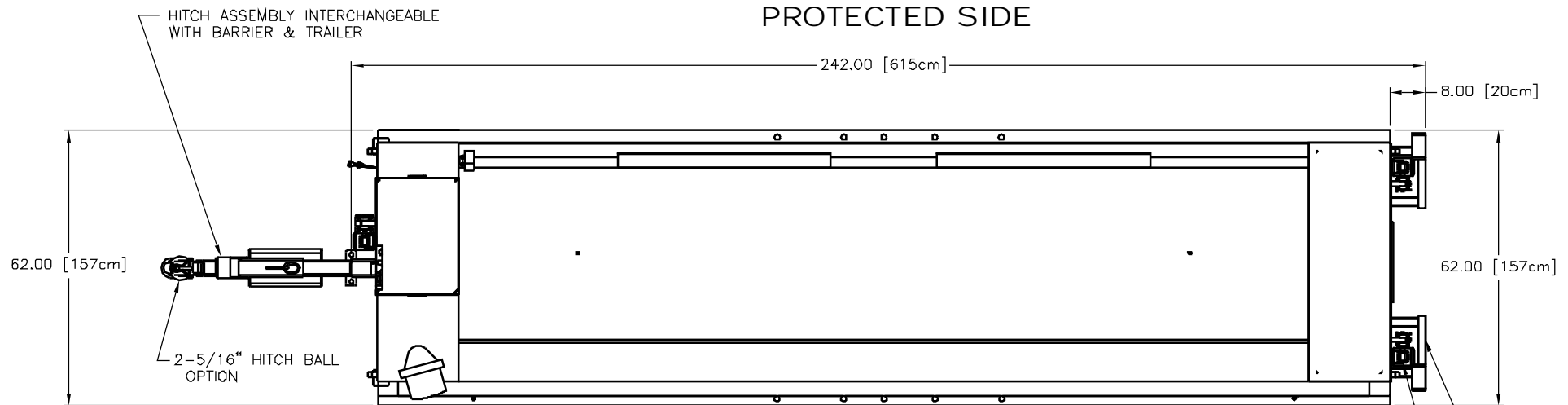
THE BARRICADE IS DEPLOYED AFTER BEING TOWED TO THE SITE AND THEN LOWERED INTO POSITION BY MEANS OF HYDRAULIC JACKS. IT IS RETRIEVED BY LIFTING THE BARRIER TO THE "TOW" POSITION USING THE SAME HYDRAULIC JACKS. NO HAND CRANKING REQUIRED. ONCE SITED THE WHEELS ARE STORED, COMPLETING THE DEPLOYMENT. ESTIMATED DEPLOYMENT TIME - LESS THAN 15 MINUTES.

BOTH THE OPERATION OF THE BARRIER AS WELL THE INITIAL DEPLOYMENT (AND RETRIEVAL) IS PUSH BUTTON CONTROLLED. THE STANDARD SYSTEM HAS A BATTERY OPERATED HYDRAULIC POWER UNIT, REPLENISHED FROM EITHER A SOLAR ARRAY OR FROM LOCAL LOW VOLTAGE SOURCES.

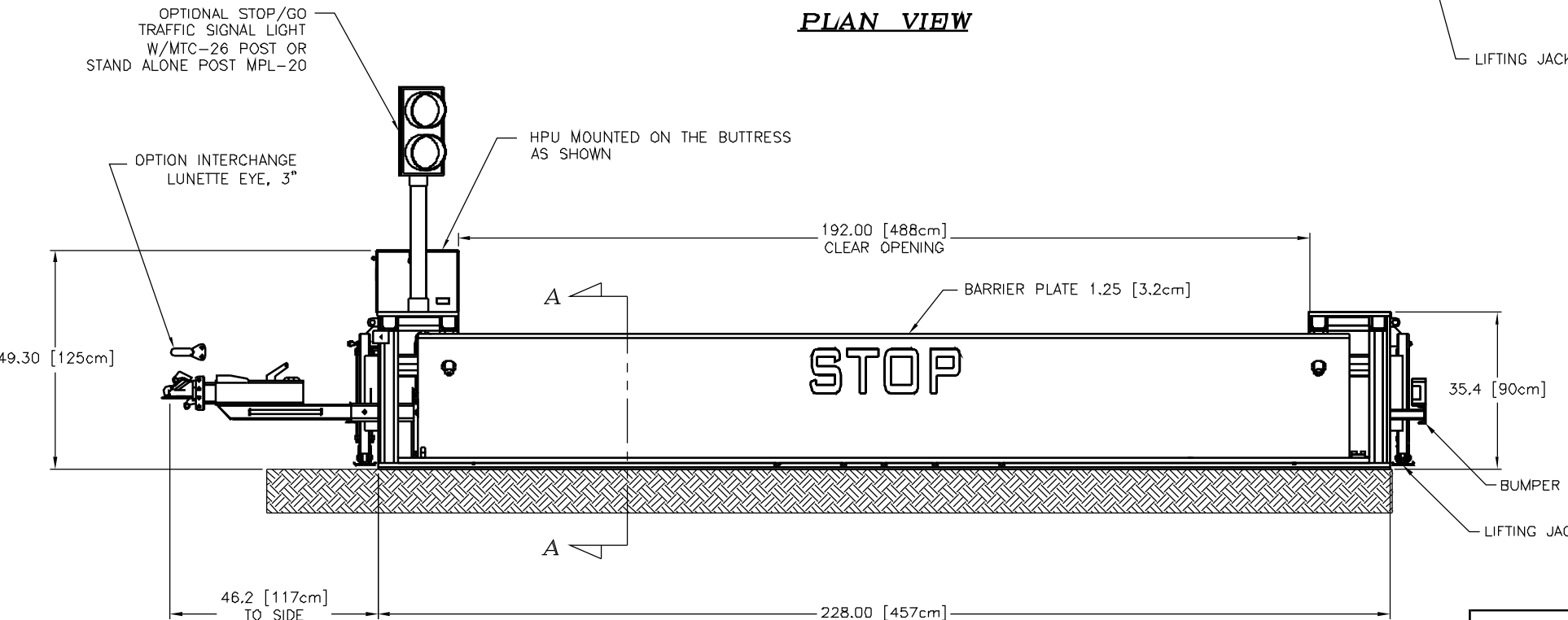
OPTIONALLY A DELTA HYDRAULIC POWER UNIT OPERATED ON LOCALLY SUPPLIED POWER OR A FULL MANUAL SYSTEM, OR COMBINATION THEREOF IS AVAILABLE. BOTH THE LOCALLY POWERED AND THE BATTERY POWERED HYDRAULIC PUMPING UNIT CAN BE SIZED TO PROVIDE PASS-THROUGH RATES SUITABLE FOR MOST INSPECTION AND IDENTIFICATION STATION REQUIREMENTS.

HYDRAULIC POWER UNIT WITH OPTIONAL FULL REMOTE/LOCAL OPERATION AND INTEGRAL CHARGER SOLAR PANEL CONVERTER.

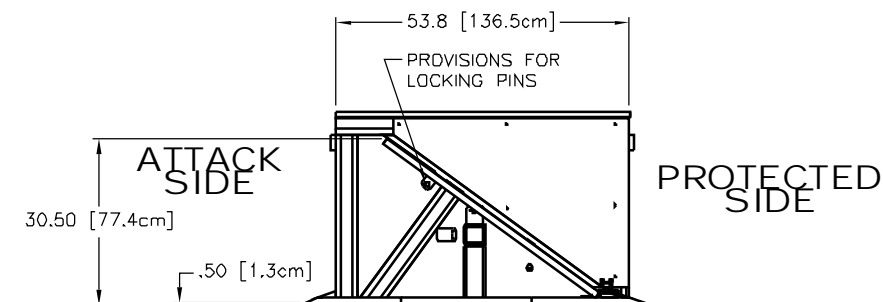
PROTECTED SIDE



ATTACK SIDE PLAN VIEW



ELEVATION



SECTION A-A

DESCRIPTION	WEIGHTS	
BARRIER ONLY	10,160 LBS	4608 Kg
TRAILER ONLY	1,159 LBS	526 Kg
BARRIER W/TRAILER	11,319 LBS	5134 Kg
TONGUE @ 26" [66 cm] HIGH	775 LBS	352 Kg

B	ECO 2009-175	J.M.	10/5/08		
A	ECO 2008-097	JFW	8/29/08		
REV.	DESCRIPTION	DRWN BY	DATE	APPVD BY	DATE
<small>THIS DRAWING UNLESS OTHERWISE NOTED REMAINS THE CONFIDENTIAL PROPERTY AND TRADE SECRET OF DELTA SCIENTIFIC CORPORATION. IT SHALL NOT BE DISCLOSED, REPRODUCED OR USED FOR MANUFACTURE, DESIGN OR CONSTRUCTION WITHOUT THE EXPRESS AUTHORIZATION OF DELTA SCIENTIFIC CORPORATION. THE HOLDER BY ACCEPTING THIS DRAWING ASSUMES CUSTODY THEREOF AND UNDER THE ABOVE TERMS AGREES NOT TO ALLOW USE OF BY UNAUTHORIZED PERSONS.</small>		<small>TOLERANCES .X = ±.060 .XX = ±.030 .XXX = ±.010 ANGLES = ±.5°</small>		<p>DELTA SCIENTIFIC CORPORATION 40355 DELTA LANE PALMDALE, CA 93551 U.S.A. (661) 575-1100 FAX (661) 575-1109</p>	
<small>UNLESS OTHERWISE NOTED DIMENSIONS ARE IN INCHES</small>		<small>SURFACE FINISH 125</small>		<p>MP5000 16' PORTABLE ROADWAY BARRIER GENERAL ARRANGEMENT</p>	
DRWN BY	DATE	DRAWING NO.	REV.		
CHKD BY	DATE	11/8/05	90121	B	
APPVD BY	DATE	SCALE:	1:18	SHEET 1 OF 1	
<small>© 2007 ALL RIGHTS RESERVED REMOVE ALL BLURS & BREAK SHARP EDGES .02 MAX</small>					

1. OPTION B2050 SELECT MTC-26, 24" HIGH BARRIER MOUNT OR MPL-20, 48" HIGH OFF BARRIER MOUNT.