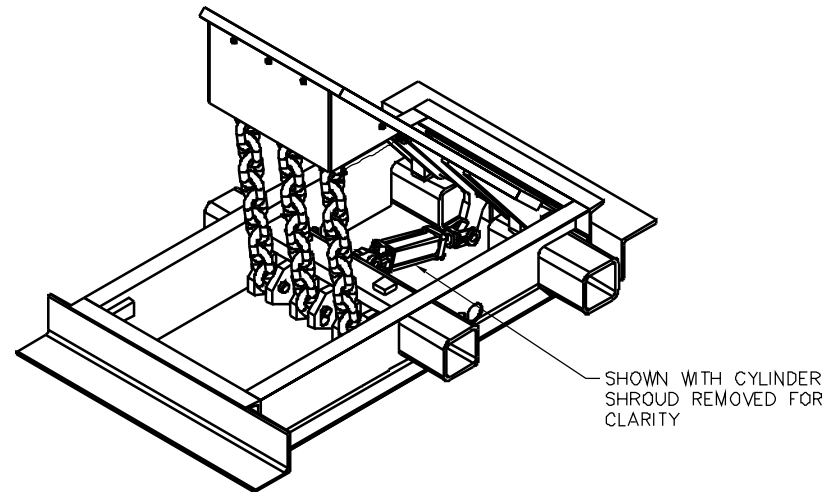


PLAN VIEW - DOWN POSITION



| ITEM | REQ'D | DESCRIPTION/MATERIAL | WT EA | TOT WT | REF NO |
|---------------|-------|---|-------|--------|----------|
| 1 | 1 | FRAME ASSEMBLY | 602.0 | 602.0 | 10716-00 |
| 2 | 1 | TOP PLATE ASSEMBLY | 523.0 | 523.0 | 10670-00 |
| 3 | 3 | CHAIN (13 LINKS) | 34.0 | 102.0 | 10704-00 |
| 4 | 1 | HYDRAULIC CYLINDER, 2.5" X 6" | 20.0 | 20.0 | 2468-08 |
| 5 | 3 | TUBE, PVC, 2.5" O.D. | 3.4 | 10.3 | 10667-05 |
| 6 | 2 | BEARING BLOCK | 5.0 | 10.0 | 2739-010 |
| 7 | 8 | SCREW, SOCKET HEAD, 1/2-20 X 2" | 0.0 | 0.2 | SSH12202 |
| 8 | 8 | WASHER, LOCK 1/2" | 0.0 | 0.1 | STOCK |
| 9 | 8 | WASHER, FLAT, 1-3/8" I.D. X 2.5" O.D. X 3/16" THK | 0.1 | 0.4 | STOCK |
| 10 | 3 | CHAIN PIN | 2.0 | 6.0 | 10679-01 |
| 11 | 1 | UPPER CHAIN PIN | 7.0 | 7.0 | 10679-02 |
| 12 | 1 | HINGE PIN | 12.0 | 12.0 | 10679-03 |
| 13 | 1 | FRONT SKIRT | 21.0 | 21.0 | 10272-00 |
| 14 | 5 | BOLT, 1/4-20 X .50 LONG, SST | 0.0 | 0.1 | STOCK |
| 15 | 5 | WASHER, 1/4" SST | 0.0 | 0.1 | STOCK |
| 16 | 5 | LOCK WASHER, 1/4" SST | 0.0 | 0.1 | STOCK |
| 17 | 3 | RING HANGER, 3/4" | 0.0 | 0.1 | 3033T12 |
| 18 | 3 | CABLE, CHAIN PULL | 0.1 | 0.3 | 10743-00 |
| 19 | 6 | BOLT, 1/4-20 X 1.25 LONG | 0.0 | 0.1 | STOCK |
| 20 | 6 | NUT, 1/4-20 | 0.0 | 0.1 | STOCK |
| 21 | 8 | LINCH PIN | 0.1 | 0.8 | STOCK |
| TOTAL WEIGHT: | | | 1,315 | | |

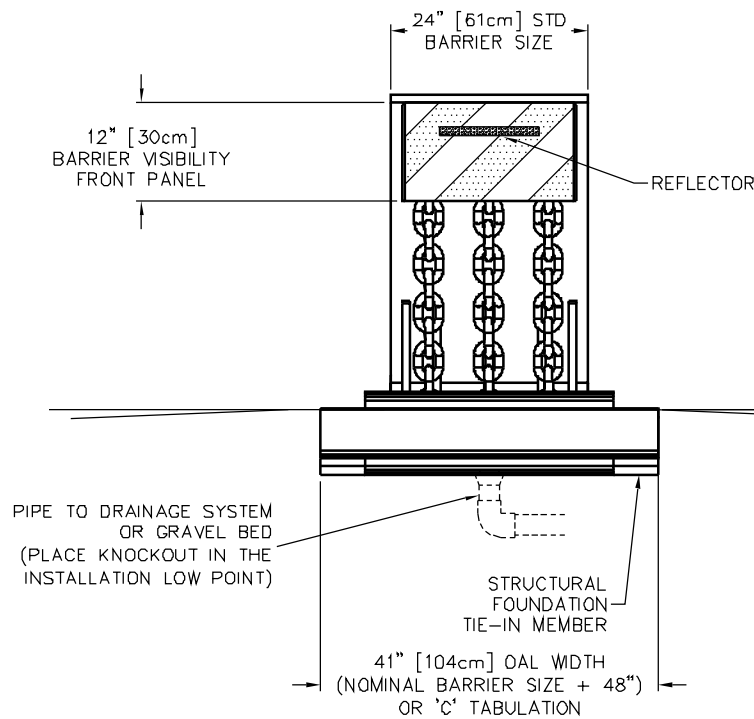
NOTES:

- OPTIONAL FEATURES (PARTIAL)

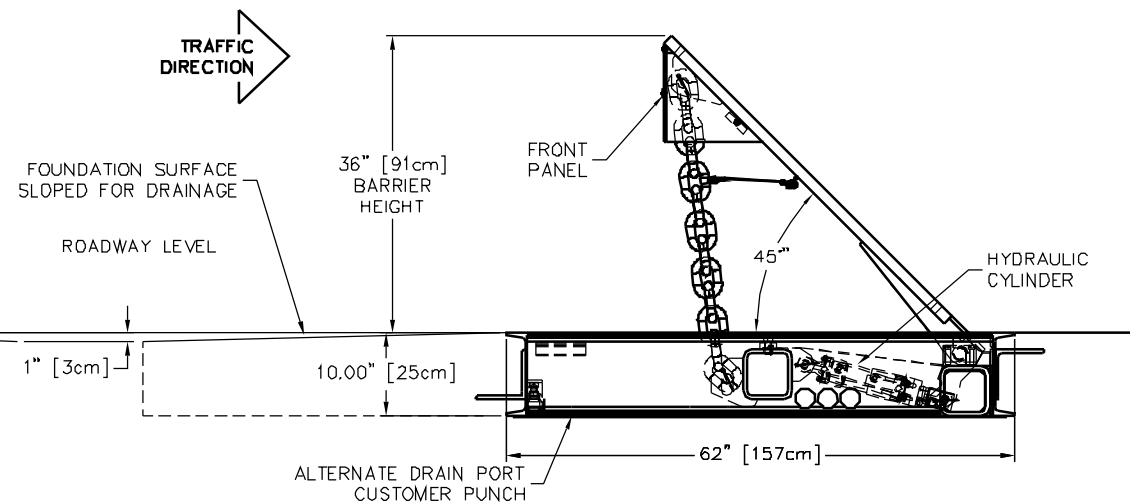
| | PART NO. |
|---|----------|
| (A) HEATER, 300 WATTS @ 120 VOLTS | B1283 |
| (A) HEATER, 300 WATTS @ 240 VOLTS | B1284 |
| (B) LIMIT SWITCH, FULLY DOWN | B2005 |
| (C) LIMIT SWITCH, FULLY UP | B2006 |
| (D) HOT-DIP GALVANIZING PRIOR TO PAINTING | |
- COLOR OPTIONS:

SCHEME 90130-20: WHITE W/4" WIDE YELLOW STRIPES
SCHEME 90130-25: BLACK W/4" WIDE YELLOW STRIPES
SCHEME 90130-30: WHITE W/4" WIDE RED STRIPES

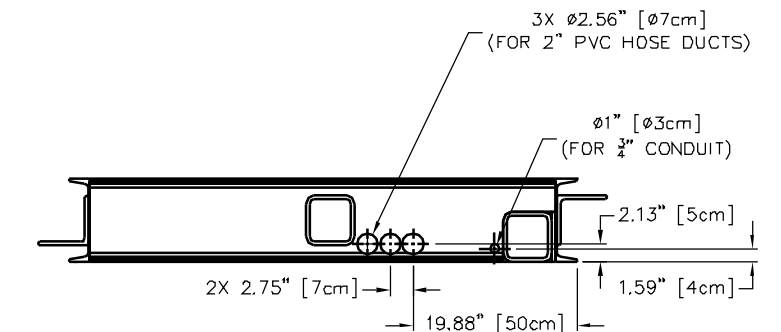
FOUNDATION - ASBESTOS FREE ASPHALT EMULSION UNDERCOAT.
- ALL STEEL MEMBERS PER AISC STANDARDS
WELDING DESIGN CRITERIA AWS D1.1, LATEST REVISION.
- ALL VISIBLE TOP STEEL COMPONENTS SANDBLASTED TO NEAR WHITE METAL AFTER FABRICATION AND PRIOR TO COATING.
- REFER TO DRAWING 91130 FOR FOUNDATION SPECIFICATION



FRONT ELEVATION - UP POSITION



SIDE ELEVATION - UP POSITION



HOSE DUCT AND CONDUIT CONNECTIONS BOTH SIDES



| REV. | DESCRIPTION | DRWN BY | DATE | APPVD BY | DATE |
|------|---------------|---------|----------|----------|------|
| A | ECO #2006-131 | JNF | 10/11/06 | | |

UNLESS OTHERWISE NOTED DIMENSIONS ARE IN INCHES

TOLERANCES
.X = ± 0.060/FT
.XX = ± 0.030/FT
.XXX = ± 0.010/FT
ANGLES = ± .5°

SURFACE FINISH
125

REMOVE ALL BURRS & BREAK SHARP EDGES .02 MAX

DELTA SCIENTIFIC CORPORATION
40355 DELTA LANE
PALMDALE, CA 93551 U.S.A.
(661) 575-1100 FAX (661) 575-1109

DSC2000 PHALANX BARRIER
GENERAL ARRANGEMENT

DRWN BY: J. FRIEND DATE: 1/25/05 DRAWING NO.: 90130 REV.: A

CHKD BY: DATE: SCALE: 1:12 (D SIZE) SHEET: 1 OF 1

APPVD BY: DATE:

© 2006 ALL RIGHTS RESERVED