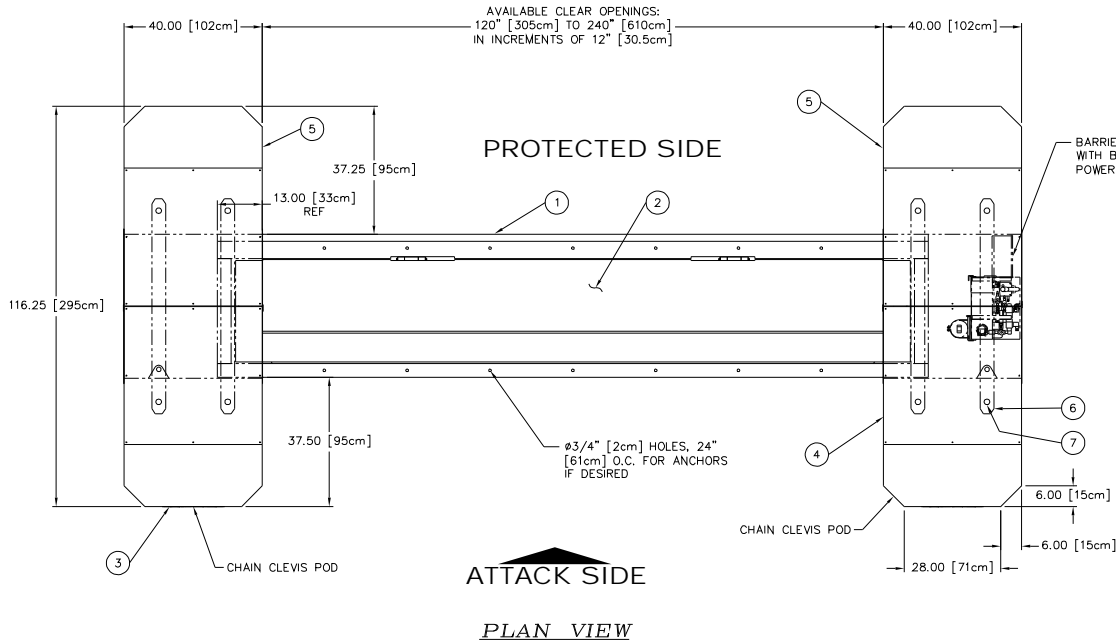
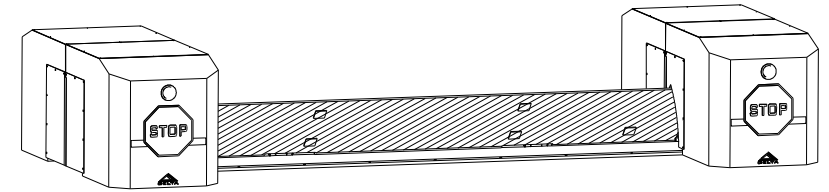


CLEAR LENGTH	WEIGHT LESS PODS	ITEM	REQ'D	DESCRIPTION/MATERIAL	WT EA	TOT WT	STK NO
12 FOOT [366cm]	243lbs [1103kg]	1	1	BARRIER BASE ASSEMBLY DSC900		-	
13 FOOT [396cm]	2543lbs [1153kg]	2	1	BARRIER PLATE ASSEMBLY DSC900		-	
14 FOOT [427cm]	2655lbs [1204kg]	3	1	LEFT CHAIN CLEVIS WEIGHT POD ASSEMBLY DSC900	889.0	889.0	8633-20
15 FOOT [457cm]	2767lbs [1255kg]	4	1	RIGHT CHAIN CLEVIS WEIGHT POD ASSEMBLY DSC900	889.0	889.0	8633-10
16 FOOT [488cm]	2879lbs [1306kg]	5	2	NO CLEVIS WEIGHT POD ASSEMBLY DSC900	889.0	1,778.0	8633-30
17 FOOT [518cm]	2991lbs [1357kg]	6	4	WEIGHT MODULE LINK BAR	106.3	425.2	8636
18 FOOT [549cm]	3103lbs [1407kg]	7	8	WEIGHT MODULE LINK PINS	5.3	42.4	8637
19 FOOT [579cm]	3215lbs [1458kg]						
20 FOOT [610cm]	3327lbs [1509kg]						

TOTAL WEIGHT: 4,023.6
 * POD WEIGHT
 LESS CONCRETE

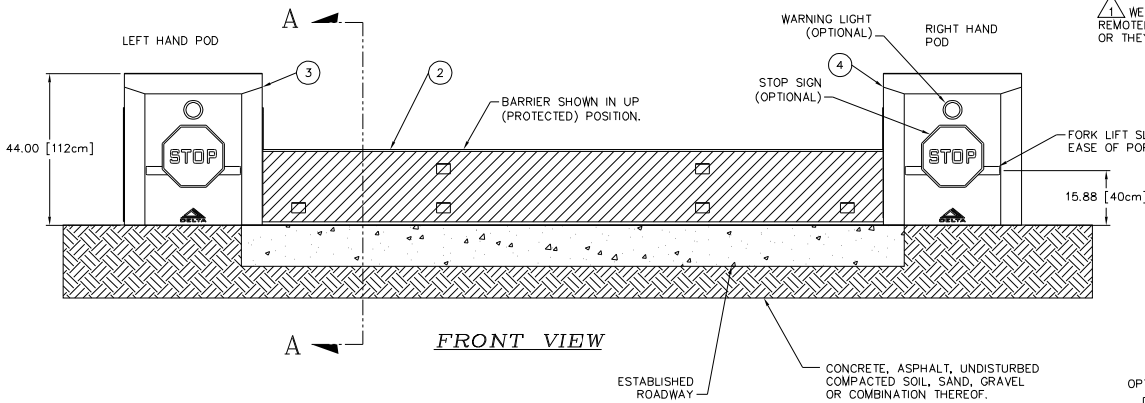


BARRIER CAN BE PROVIDED WITH BUILT IN HYDRAULIC POWER UNIT (OPTIONAL).

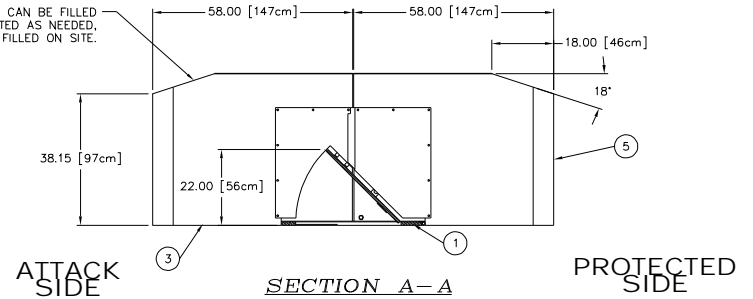


DELTA SCIENTIFIC'S DSC900 TRANSPORTABLE BARRIER

DELTA'S DSC900 QUICK DEPLOYMENT BARRIER CONSISTS OF A HYDRAULIC POWER UNIT, FOUR WEIGHT PODS AND A BARRIER RAM. THESE COMPONENTS CAN BE QUICKLY DEPLOYED BY POSITIONING THE PODS IN PLACE AND QUICKLY INTERLOCKING THEM TOGETHER WITH THE PROVIDED LINKS AND PINS. WHEN THE BARRIER IS NO LONGER REQUIRED, SIMPLY DISASSEMBLE AND STORE AWAY FOR FUTURE USE.



1 WEIGHT PODS CAN BE FILLED REMOTELY AND SITED AS NEEDED, OR THEY MAY BE FILLED ON SITE.



1 UNIT REQUIRES 5.89 CUBIC YARDS [4.5 CUBIC METERS] OF CONCRETE TO FILL THE PODS. THIS UNIT IS NOT RATED FOR OTHER TYPES OF FILL MEDIA.

OPTIONAL FEATURES INCLUDE

- (A) HEATER, 400 WATTS @ 120 VOLTS B3020
- (B) HEATER, 400 WATTS @ 240 VOLTS B3021

PART NO.

C	SEE ECO 2004-025	DCM	02/11/04	
B	ECO-2004-018	J.M.	1/28/04	
A	ADDED LENGTHS, REVISED COVERS	M.P.	02/01/11	
REV.	DESCRIPTION	DATE	DATE	APPROV BY
UNLESS OTHERWISE NOTED DIMENSIONS ARE IN INCHES		DELTA SCIENTIFIC CORPORATION 24901 WEST AVE. STAMFORD VALENCIA, CA 91355 U.S.A. (661) 257-1800 FAX (661) 257-0817		
TOLERANCES X = ±.060 XX = ±.030 XXX = ±.010 ANGLES = ±.5°		MODEL DSC900 TRANSPORTABLE BARRIER - GENERAL ARRANGEMENT		
SURFACE FINISH 125 V		DATE	DATE	REV.
DRAWN BY		DATE	DATE	DATE
CHECK BY		DATE	DATE	DATE
APPROV BY		DATE	DATE	DATE
© 2002 ALL RIGHTS RESERVED		REWORK ALL BUBBS & BREAK SHARP EDGES .02 MAX		SCALE: 1:18 SHEET 1 OF 1