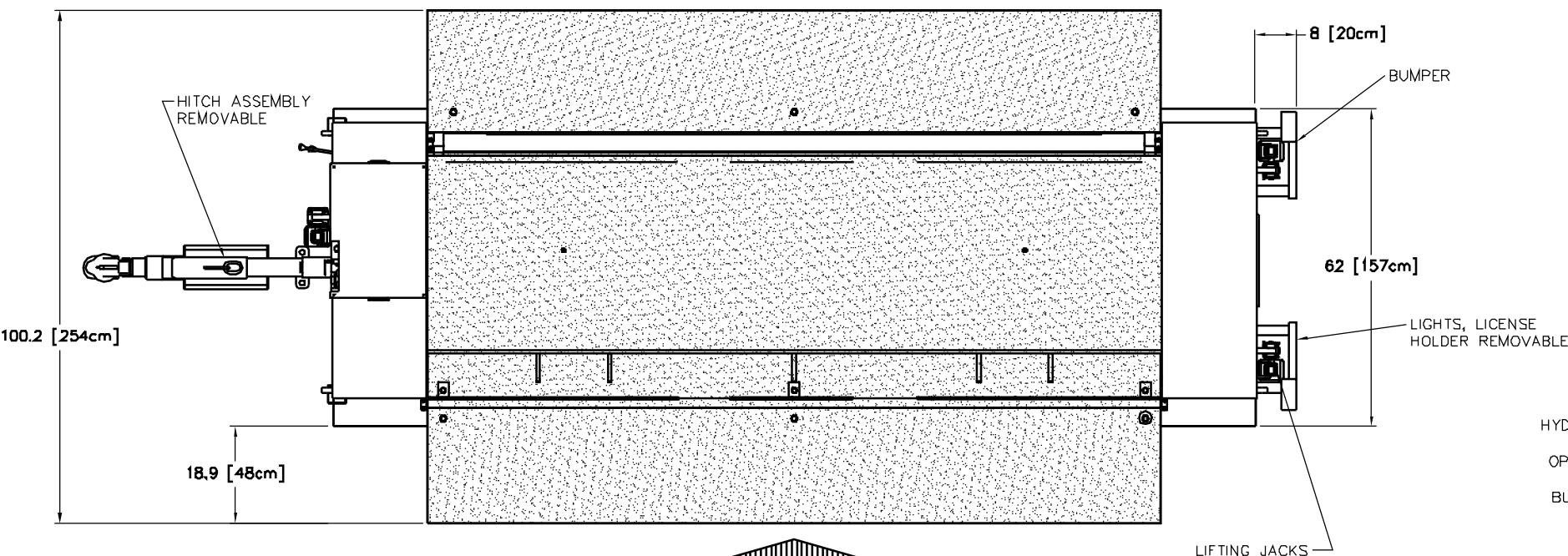
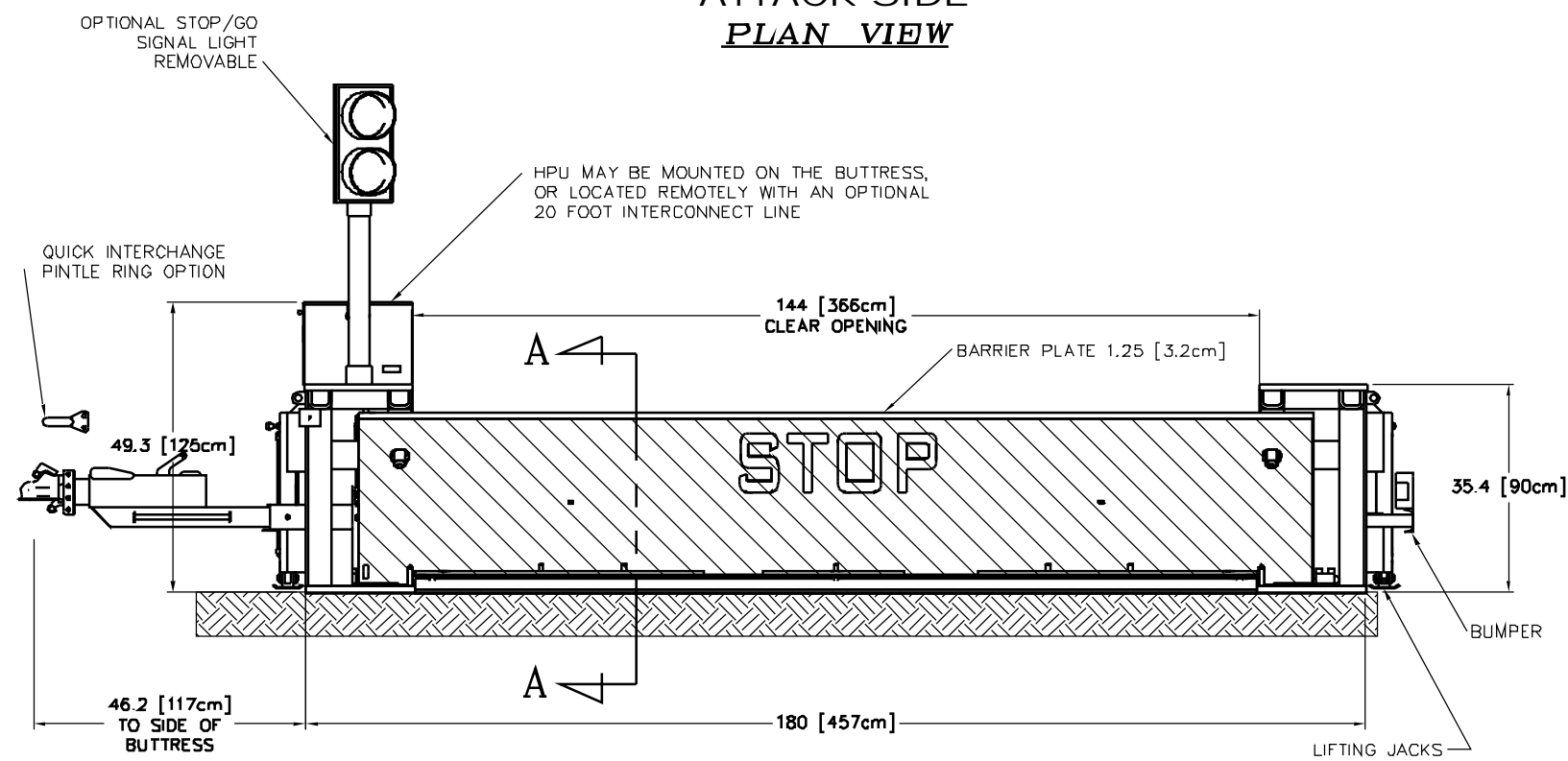


TOW EXAMPLE

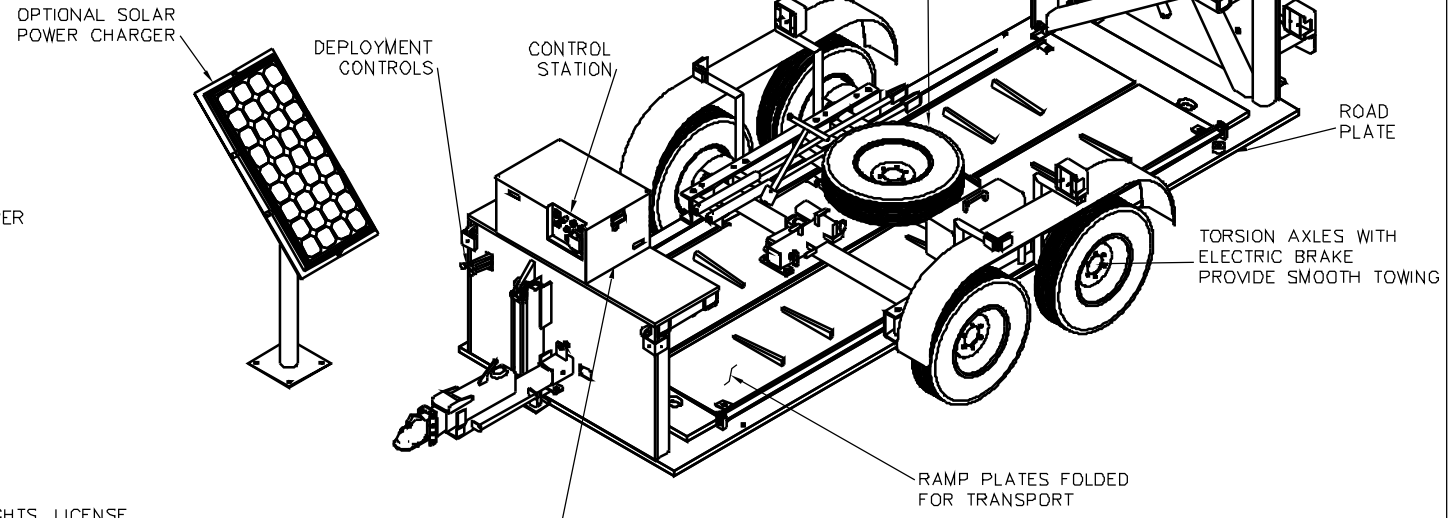
PROTECTED SIDE



**ATTACK SIDE
PLAN VIEW**



ELEVATION



HYDRAULIC POWER UNIT WITH OPTIONAL FULL REMOTE/LOCAL AUTOMATIC OPERATION AND INTEGRAL CHARGER - SOLAR PANEL CONVERTER. (PUSH BUTTON, R.F., VEHICLE IDENTIFICATION, CARD READER, KEY PAD ... ETC.)

DELTA SCIENTIFIC'S MP5000 PORTABLE CRASH RATED BARRIER

THE SYSTEM HAS BEEN TESTED IN FULL SCALE CONFIGURATION AT AN INDEPENDENT TESTING LABORATORY AND HAS BEEN CERTIFIED TO HAVE MET THE U.S. DEPARTMENT OF STATE TESTING DOCUMENT SD-STD-02.01 DATED APRIL 1985 WITH RATINGS OF K4-L1 (FULL SCALE CRASH TEST FOR CERTIFICATION SUCCESSFULLY CONDUCTED BY KARCO ENGINEERING, ADELANTO, CA ON MAY 29, 2003). IT IS CONFIGURED FOR EXPEDITED DEPLOYMENT AND, AS NEEDED, RETRIEVAL AND RELOCATION.

THIS BARRIER SYSTEM CAN BE SITED ON EXISTING CONCRETE OR ASPHALT ROADWAYS OR VERGES; LEVEL COMPACTED SOILS OR SOME COMBINATION OF THESE. NO EXCAVATION OR SUB-SURFACE PREPARATION IS REQUIRED.

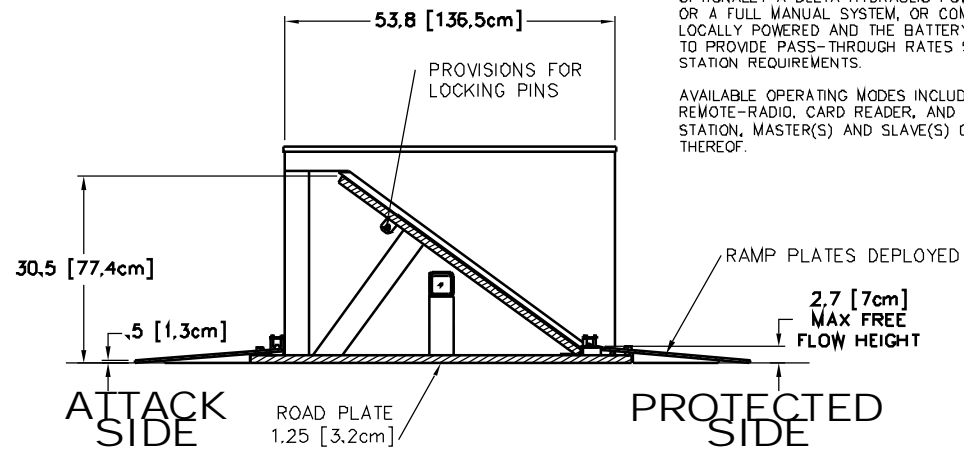
THE MP5000 IS A PHALANX TYPE BARRIER RAMP TOTALLY SELF CONTAINED WITH FREE PASSAGE BETWEEN BUTTRESSES OF 12 FT. (144IN.). LOW PROFILE FREE TRAFFIC FLOW BARRICADE RAMP. SELF CONTAINED DEPLOYABLE RAMP WITH MAXIMUM ROAD CLEARANCE.

THE BARRICADE IS DEPLOYED AFTER BEING TOWED TO THE SITE AND THEN LOWERED INTO POSITION BY MEANS OF HYDRAULIC JACKS. IT IS RETRIEVED BY LIFTING THE BARRIER TO THE 'TOW' POSITION USING THE SAME HYDRAULIC JACKS. NO HAND CRANKING REQUIRED. ONCE SITED THE WHEELS ARE STORED AND THEN VEHICLE RAMP IS FOLDED OUT, COMPLETING THE DEPLOYMENT. ESTIMATED DEPLOYMENT TIME - LESS THAN 15 MINUTES.

BOTH THE OPERATION OF THE BARRIER AS WELL THE INITIAL DEPLOYMENT (AND RETRIEVAL) IS PUSH BUTTON CONTROLLED. THE STANDARD SYSTEM HAS A BATTERY OPERATED HYDRAULIC POWER UNIT, REPLENISHED FROM EITHER A SOLAR ARRAY OR FROM LOCAL LOW VOLTAGE SOURCES.

OPTIONALLY A DELTA HYDRAULIC POWER UNIT OPERATED ON LOCALLY SUPPLIED POWER OR A FULL MANUAL SYSTEM, OR COMBINATION THEREOF IS AVAILABLE. BOTH THE LOCALLY POWERED AND THE BATTERY POWERED HYDRAULIC PUMPING UNIT CAN BE SIZED TO PROVIDE PASS-THROUGH RATES SUITABLE FOR MOST INSPECTION AND IDENTIFICATION STATION REQUIREMENTS.

AVAILABLE OPERATING MODES INCLUDE: FULL AUTOMATIC, REMOTE- HARD LINE, REMOTE-RADIO, CARD READER, AND KEY SWITCH AND BY LOCAL GUARD PUSH BUTTON STATION, MASTER(S) AND SLAVE(S) CONTROL PANELS...ETC. - OR BY COMBINATIONS THEREOF.



SECTION A-A

<small>THIS DRAWING UNLESS OTHERWISE NOTED, REMAINS THE SOLE PROPERTY AND TRADE SECRET OF DELTA SCIENTIFIC CORPORATION. IT SHALL NOT BE DISCLOSED, REPRODUCED OR USED FOR MANUFACTURE, DESIGN OR CONSTRUCTION WITHOUT THE EXPRESS AUTHORIZATION OF DELTA SCIENTIFIC CORPORATION. THE HOLDER BY ASSUMING THIS DRAWING ASSUMES COMPLETE RESPONSIBILITY AND UNDER THE ABOVE TERMS AGREES NOT TO ALLOW USE OF BY UNAUTHORIZED PERSONS.</small>		<small>UNLESS OTHERWISE NOTED, DIMENSIONS ARE IN INCHES.</small>		DELTA SCIENTIFIC CORPORATION 24901 WEST AVE. STAMFORD VALENCIA, CA 91355 U.S.A. (661) 257-1800 FAX (661) 257-0617	
<small>TOLERANCES: .X = ±.060 .XX = ±.030 .XXX = ±.010 ANGLES = ±.5°</small>		<small>SURFACE FINISH 125</small>		MP5000 PORTABLE ROADWAY BARRIER GENERAL ARRANGEMENT	
<small>DRWN BY PROVOST</small>	<small>DATE 030512</small>	<small>DRAWING NO. 90120</small>	<small>REV. A</small>	<small>SCALE: 1:16</small>	
<small>CHKD BY</small>	<small>DATE</small>	<small>SHEET 1 OF 1</small>	<small>APPROV BY DATE</small>		



PHALANX™