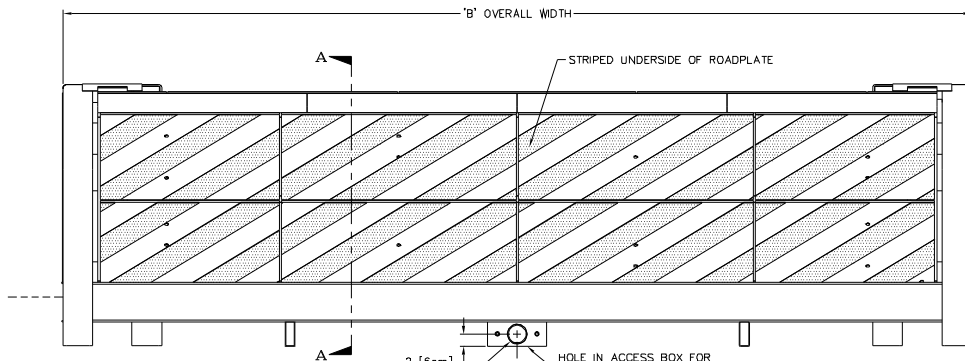


PLAN VIEW
(RAM IN DOWN POSITION)



FRONT ELEVATION

NOTES:

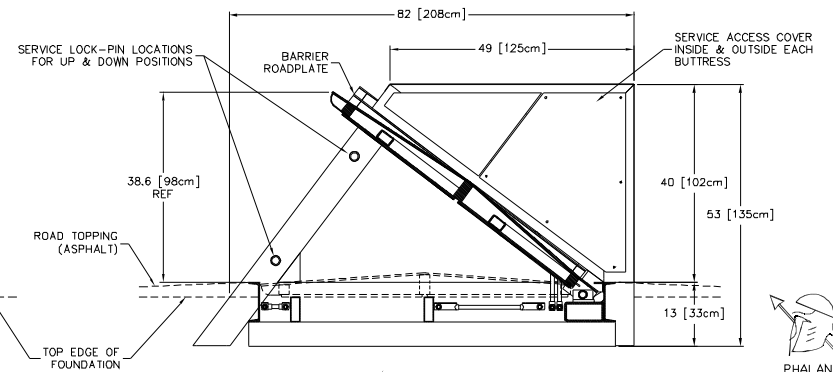
- OPTIONAL FEATURES INCLUDE:

	DESCRIPTION	PART #
A	HEATER, 1400 WATTS @ 120 VOLTS	B1350
A	HEATER, 1400 WATTS @ 240 VOLTS	B1351
B	LIMIT SWITCH, FULLY DOWN	B2010
C	LIMIT SWITCH, FULLY UP	B2011
- REFERENCE DRAWING D02633 FOR COLOR OPTIONS:
 D02633-3 WHITE W/6" WIDE YELLOW STRIPES
 D02633-4 YELLOW W/6" WIDE BLACK STRIPES
 D02633-5 WHITE W/6" WIDE RED STRIPES
- ALL STEEL MEMBERS PER AISC STANDARDS. WELDING DESIGN CRITERIA AWS D1.1, LATEST REVISION.
- ALL MILD STEEL COMPONENTS SANDBLASTED TO NEAR WHITE METAL AFTER FABRICATION AND PRIOR TO COATING.

2 in	488 cm	232 in	589 cm	9.770 lbs	4.430 k
6 in	549 cm	256 in	650 cm	10.470 lbs	4.750 k
8 in	579 cm	268 in	681 cm	10.820 lbs	4.910 k
0 in	610 cm	280 in	711 cm	11.170 lbs	5.070 k

PERSPECTIVE - RAM DOWN

PERSPECTIVE - RAM UP



SECTION A-A



PHALANX™

REV.	DESCRIPTION	T.S.	DATE	APPROV BY	DATE
D	REVISED TABULATED DATA	JNF	08/09/00		
C	REVISED TABULATED DATA	T.S.	12/20/99		
B	REVISED TO TABULATED FORM	T.S.	12/20/99		
A	REVISED ACCESS SUB-UP	T.S.	12/7/99		

NO. UNLESS UNLESS OTHERWISE NOTED DIMENSIONS ARE IN INCHES	UNLESS OTHERWISE NOTED DIMENSIONS ARE IN INCHES
DELTA SCIENTIFIC CORPORATION 24901 WEST AVE STANFORD VALLEJO, CA 94326 U.S.A. (805) 257-1800 FAX (805) 257-0617	DELTA SCIENTIFIC CORPORATION 24901 WEST AVE STANFORD VALLEJO, CA 94326 U.S.A. (805) 257-1800 FAX (805) 257-0617
TOLERANCES X = ± 0.005/FT Y = ± 0.010/FT Z = ± 0.010/FT ANGLES = ± 5°	TOLERANCES X = ± 0.005/FT Y = ± 0.010/FT Z = ± 0.010/FT ANGLES = ± 5°
SURFACE FINISH 120	SURFACE FINISH 120
DRWN BY: S FORZA CHKD BY: DATE: 12/7/99	DRWING NO: 90100 REV: D
APPROV BY: DATE:	SCALE: 1:12 (D SIZE) SHEET: 1 OF 1